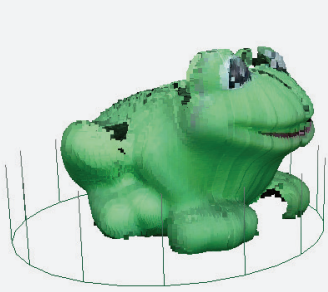


# MATTER and FORM

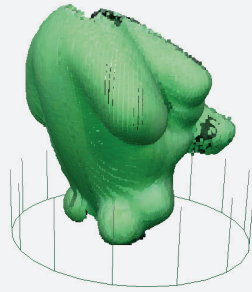
## Dos and Don'ts of 3D Scanning

### Baseline Performance



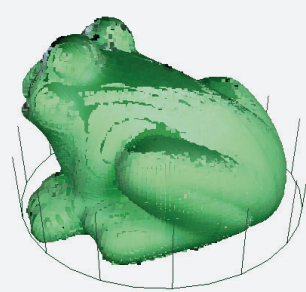
#### 1st Scan

Time: 12 Minutes (Regular scan)  
65 seconds (+Quickscan)  
Point Cloud after Auto Clean



#### 2nd Scan

Time: 11 Minutes (Regular scan)  
65 seconds (+Quickscan)  
Point Cloud after Auto Clean



#### Aligned Scans

Time: 30 seconds  
1st and 2nd scans "aligned"  
after Auto Clean



#### Meshed STL

Time: 3 Minutes  
Exported STL file of Point Cloud  
with Mesh level of 8.

## Not getting similar scan results?

Contact Us. We're happy to help however possible!

Help and Manuals: [www.matterandform.net/help](http://www.matterandform.net/help)  
Email: [support@matterandform.net](mailto:support@matterandform.net)  
Call our office: + 1 416-533-6767 (9am-5pm EST Mon-Fri)

Download all the frog files at [www.matterandform.net/downloads/frog.zip](http://www.matterandform.net/downloads/frog.zip)

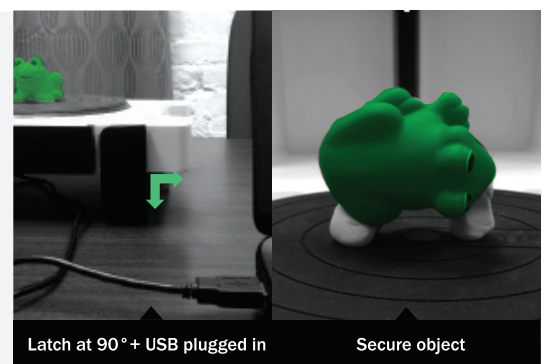
## The Dos of 3D scanning



- Set the scanner up as instructed.
- Scan in a bright, evenly lit room.
- Calibrate the scanner whenever it's moved.



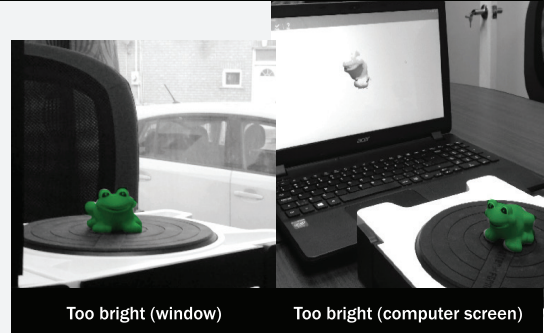
- Ensure scanner latch is down and at 90° angle.
- Secure wobbly/rolling objects to the turntable with Plasticine, tape, or custom mounts.
- Plug into a USB port on your computer (if scanner states "disconnected" try turning on/off the scanner 2-3 times).



# The Don'ts of 3D scanning: Scanning Environment



- Don't scan with camera facing excessively bright or reflective background elements (windows, mirrors, computer screens, glass or metal objects, etc).

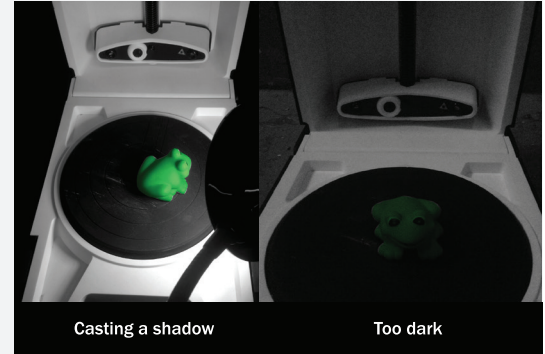


Too bright (window)

Too bright (computer screen)



- Don't light the object in a way that creates a shadow.
- Don't scan in a dark or dimly lit room.



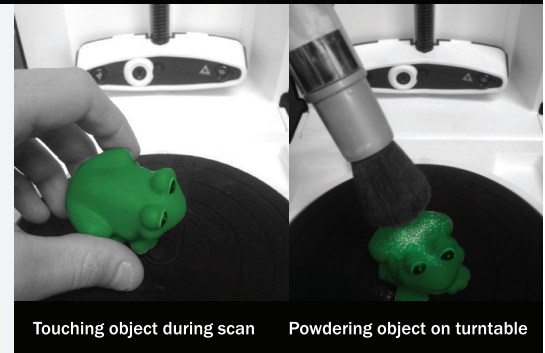
Casting a shadow

Too dark

# The Don'ts of 3D scanning: Scan Object



- Don't move or touch an object while it's being scanned.
- When powdering or spraying an object, don't do it when it's on the scanner turntable.



Touching object during scan

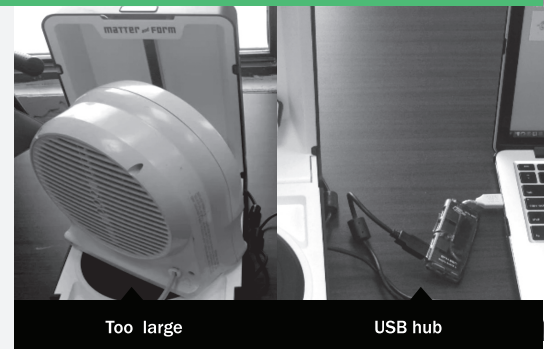
Powdering object on turntable



Powdering or spraying objects that are highly reflective, translucent, or transparent before scanning will likely yield better scans. We recommend using baby/talcum powder, matte spray paint, or hairspray for optimal results.



- Don't attempt to scan objects that are too large to fit on the scanner turntable.
- Don't plug into a USB hub.



Too large

USB hub



[www.matterandform.net/manuals](http://www.matterandform.net/manuals)

**MATTER and FORM**